



WORK INSTRUCTIONS FOR PROCESSOR TEST PROCESS

1.0 Purpose

1.1 To establish a process for testing Processors

2.0 Definitions

3.1 HP – Hewlett Packard

3.2 Test Jig – PC station set up to test computer components such as memory, CPU, etc.

3.3 PC – Personal Computer

3.4 CPU – Central Processing Unit

3.5 POST – Power On Self Test

3.6 DataSweep – Singh's data collection system

3.7 OEM – Original Equipment Manufacturer

3.8 ESD – Electrostatic Discharge

3.10 DIAG – Diagnostic

3.11 MMX – Multi Megatrend Extension

3.12 ICS – Integrated Circuits

3.14 PN – Part Number

3.15 SPS – Spare

3.16 IC – Integrated Circuit

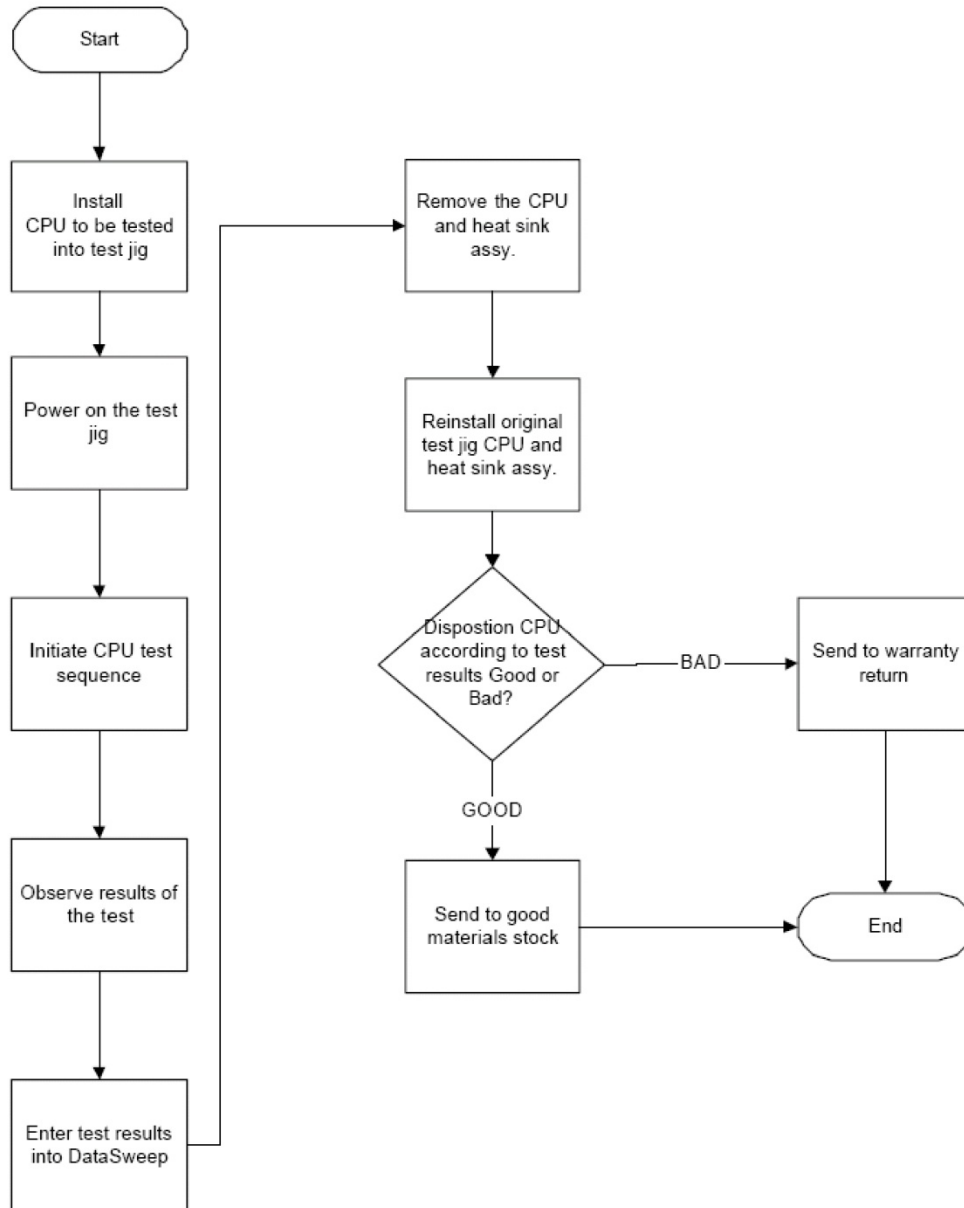
3.17 TS – Test Station

3.18 Passmark Burn In – CPU diagnostic test application

3.19 SIMD – Single Instruction, Multiple Data

3.20 RAM – Random Access Memory

5.0 Process Flowchart



Materials

1. Processors

Equipment

1. Test Stations

Software

1. Passmark Burn In

A. To assist with CPU Test Station Identification, use the labels next to the motherboard

WARNING: Operators must wear an ESD cord at all times when handling components on the test jig. NOTE: A fan must be securely fastened on the motherboard when testing.

Please refer to Screenshots on next page for reference

1. Click on the Passmark.

NOTE: Set the number of loops at 10.

2. Click on the Boxes of the following commands.

- Test
- Custom Test
- System

3. Select the following:

- Processors
- Processor1

4. Check on the Numeric Coprocessor test.

5. Check on the General Purpose Register test.

6. Check on the MMX Register Test.

- Refresh timer: 8254 Timer, Counter 2

7. Check on the Refresh timer test.

- Speaker: Internal Speaker

8. Check on the Continuous Ton test.

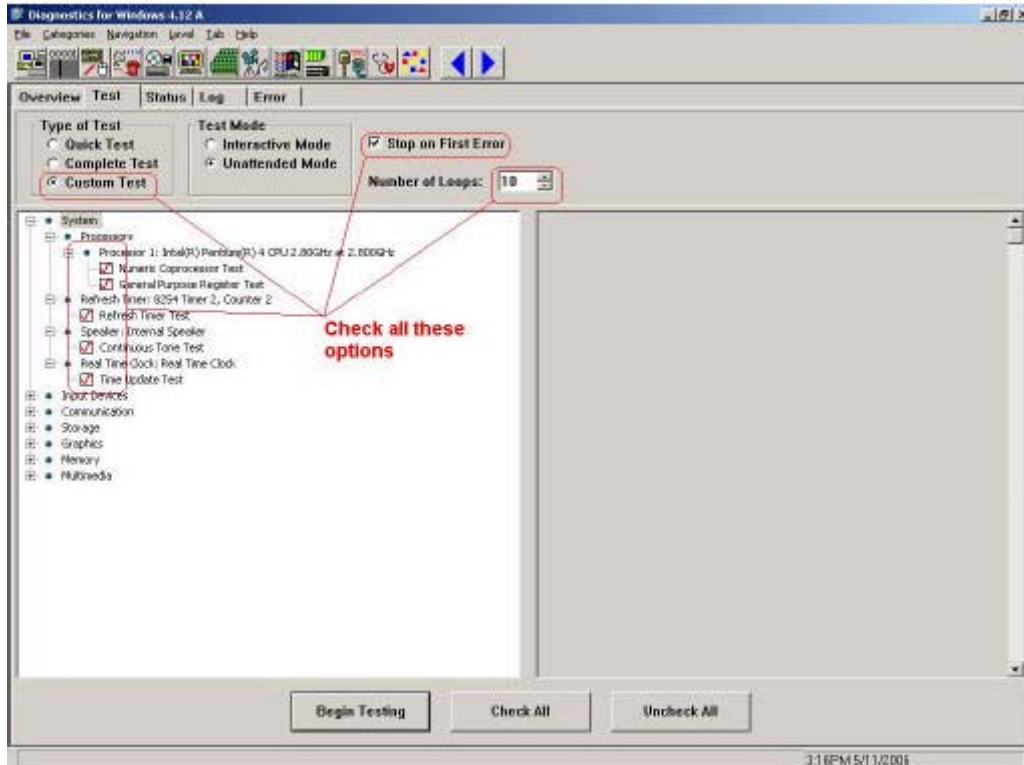
- Real time clock: Real time clock

9. Check on the Time Update test.

10. Check on the Date Roll Over test.

- This test does not exist for Test Station 31.

11. Click on BEGIN TESTING.

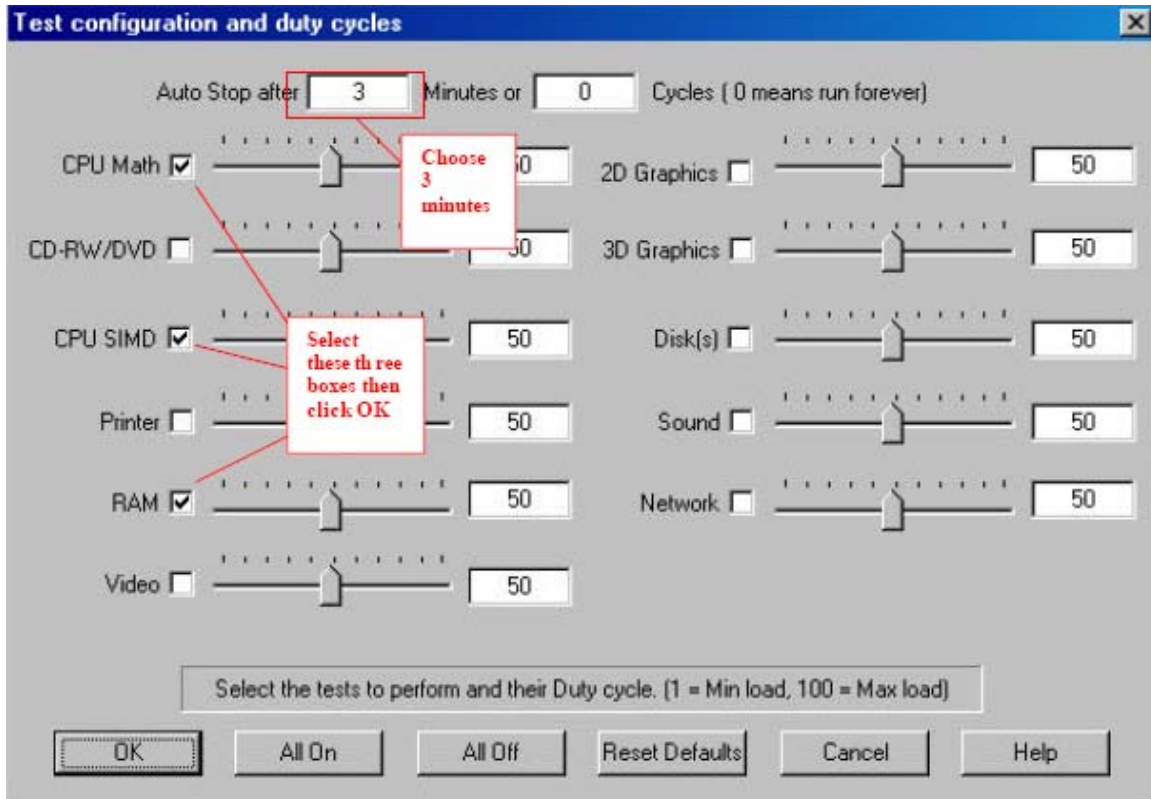


B. Passmark Burn In

1. Click on the Burn In icon.
2. Click on the green play button.
 - The test launches.
 - Once the test is complete, it says “Passed” or “Failed”.
3. Click OK.
4. Test Configurations
 - a. Check the box for CPU Math.
 - b. Check the box for CPU SIMD.
 - c. Check the box for RAM.
 - d. Choose a three (3) minute run time.

Settings for Passmark Burn In Settings

1. Select the Preferences button to access the settings.
2. Choose to auto stop after three minutes.
3. Check the box for CPU Math, CPU SIMD and RAM.



END OF CONFIGURATION SETTINGS